

pack

idea THERMOFORM

VACUUM

machinery

MAP

heat treatment
innovation

skin

new generation of
PACKAGING

flexible
film

FOOD

solution process

concept

custom

sousvide

process

medical

Spare Parts

paper

design

**INNOVATIVE
PACKAGING SOLUTIONS**

WHAT WE ARE DOING



PACKAGING MACHINES

VACUUM

MAP

SKIN

FLEXIBLE FILM SOLUTIONS

ALL KIND OF PLASTIC
AND PAPER
PACKAGING FILMS

VALUE ADDED PRODUCTS

EAT-WITH-THE-PACK

ON-THE-GO

LIFE STYLE FOODS

THE COMPANY



APACK is a world leading provider of tailor-made food processing and packaging solution. Established in 2005 and with reference to adding value to customer product. Every new generation comes with new ideas that become tomorrow's traditions. Our packaging design and functionality that respects tradition, but at the same time creates a wide range of new opportunities. Our solutions creates a new platform for a whole new range of innovative products, targeting the next generation of consumers.

Single or Double Chamber VACUUM MACHINES

Portable DESKTOP TRAY SEALERS

SEMI AUTOMATIC TRAY SEALERS

FULLY AUTOMATIC TRAY PACKAGING LINES

THERMOFORMING MACHINE SERIES

PACKAGING LINE ACCESSORIES

DOT Series DESKTOP TRAY SEALER

The wide range of **DOT** tray sealers offers the perfect model for various application. The unit has integrated with sealing and cutting functions. It is safe investment for many years and increase sales. The local patented machines are easy-to-use, also economic for small-volume. They work well to seal both cold and hot food. **DOT** Series portable tray sealers have various model as **S (Seals only)**, **SC (Seal & Cut)**, **E (Extended)** **DOT** tray sealers are stand for quality, minimal maintance, reliability as well as state-of-the-art technologies are safety-tested.

DOT Series DESKTOP TRAY SEALER Technical Details

TRAY DIMENSIONS for S&SC Series (mm) Film Diameter max. 240 mm.	1.1 Tool 200 x 270
	2.1 Tool 90 x 270
	2.2 Tool 90 x 125
	3.1 Tool 50 x 270
TRAY DIMENSIONS for E (Extended) Series (mm) Film Diameter max. 320 mm.	1.1 Tool 265 x 325
	2.1 Tool 120 x 325
	2.2 Tool 120 x 150
	3.1 Tool 70 x 325
POWER CONSUPTION	220 VAC, 2.0 kW Max.
CAPACITY	2-6 cycle/minute



MAP25 SEMI AUTOMATIC TRAY SEALER

MAP-25 is innovative designed by **APACK Team** for vacuum drawing and gas flushing in one go and sealing tray with top film while tray is under pressure.

MAP-25 is compatible for remote access option to control the **MAP25's** electric – electronic and mechanic system via internet.

Only one operator required (Except MAP25DS -Double Station- Model requires two operators).

MAP 25 tray sealer hermetically seals special plastic containers using a flexible film. While sealing, a good level of vacuum can be reached inside the container as well as the insertion of different types of inert gases.

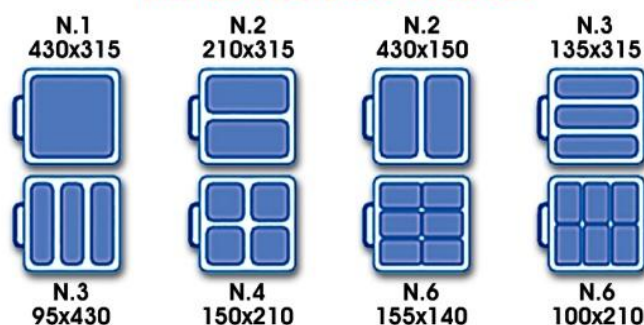
MAP25 can handle also the entire production of most small and medium businesses in vegetarian or non vegetarian snack food, confectionery and fresh cut vegetables.

MAP25 has own impulse Step Vacuum software. With this software, MAP25 take all Oxygen progressively out from the package.

Semiautomatic **MAP25** thermal sealer unit is manufactured by high quality craft workmanship.



MAP25 STANDARD TOOL SET



MAP25 MODELS



MAP25 DS DOUBLE STATION

After a period of your business, the **MAP25's** production capacity not sufficient for your market. In this case, you may thinking about upgrade your machinery to line-type machines. But if the market conditions and your business pie not dependable, we've got another solution.

You may easily increase your production capacity with **MAP25 DS**. It is an economic machine that does not require more space and more budget as big machines. We designed **MAP25 DS** for that type of marketing conditions.



MAP25 X BUTTERFLY

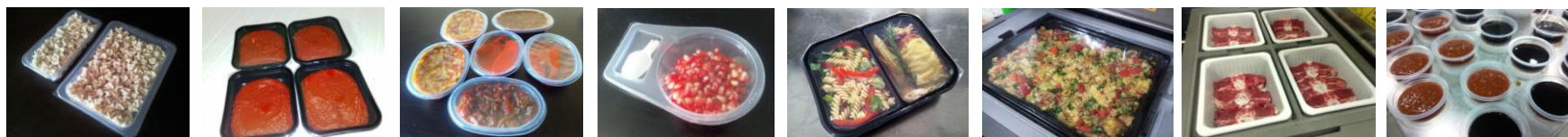
Custom models are developed according to the customer's demands. **MAP25 X - Butterfly** is a practical solution that designed as a result of demand from our customers. In this way, the **MAP25** serie machines has abilities to get closer to big line machines with new plug-ins. So now we can add a scale, a barcode reader or printer units, even collecting tables beside **MAP25**.

**MAP25-E
EXTENDED
MAP25-SP
SKIN PACK**

**MAP25-DS
DOUBLE STATION
MAP25-X
CUSTOM**



MAP25 Technical Details	
ENERGY	400V, 50Hz, 3/N/PE
POWER CONSUMPTION	6.0 kw. Max.
VACUUM PUMP	60 m ³ /h
AIR CONSUMPTION	7 NL per cycle, 30 NL/minute, 6 bar
GAS PRESSURE	2-6 bar
CONTROL SYSTEM	24 PLC
OVERALL DIMENSIONS	650(W)x1090(L)x1720(H) mm.
WEIGHT incl.PUMP	200 Kg.
FILM WIDHT	470 mm. Max
FILM ROLL DIAMETER	76 mm.
CAPACITY	2-6 cycle/minute



autoMAP100 – 200 FULLY AUTOMATIC PACKAGING LINE

AutoMAP 100-200 serie fully automatic packaging line is designed for both inline and offline filled products. Seal only, vacuum and modified atmosphere capability provides versatility and increases productivity. Trays are advanced by stepping motor into sealing mold; sealed, cut and released on to a conveyor. Finished packages are conveyed through indexing, labeling, inkjet coding followed by metal detection and check weigher. The unit is suitable for multi compartment tray sealing.

AutoMAP 100-200 series machines has impulse Step Vacuum volume-controlled gas flushing system. This ensures that the pack contains exactly the right amount of protective gas, for efficient economic use. Step Vacuum can help to reach max vacuum level and minimum oxygen in the pack. It is also possible to pack hot and liquid product via multi-stage vacuum.

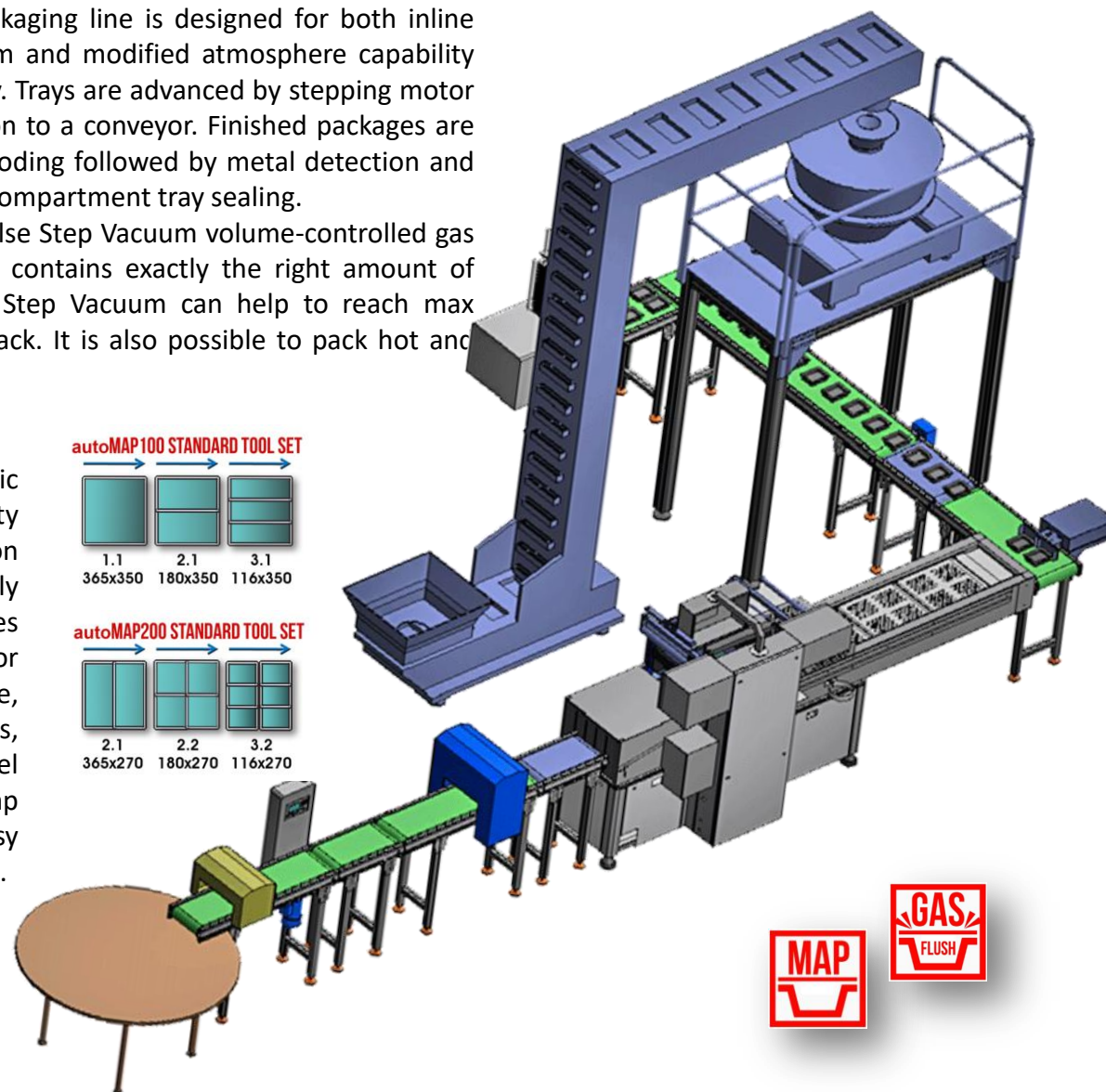
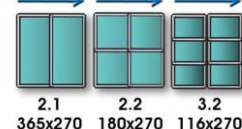
The **AutoMAP 100-200** serie fully automatic packaging line provides to maximum reliability and the flexibility to adapt your production demands. **AutoMAP 100-200** serie fully automatic packaging line machines includes photocells for printed film, gas tank for modified atmosphere packaging technique, protection equipped with safety switches, emergency push button, 304 Stainless steel machine frame, CE conformity, vacuum pump is placed in the machine frame, easy connections for electrical power and gas lines.

Special features and functions can be install according to production.

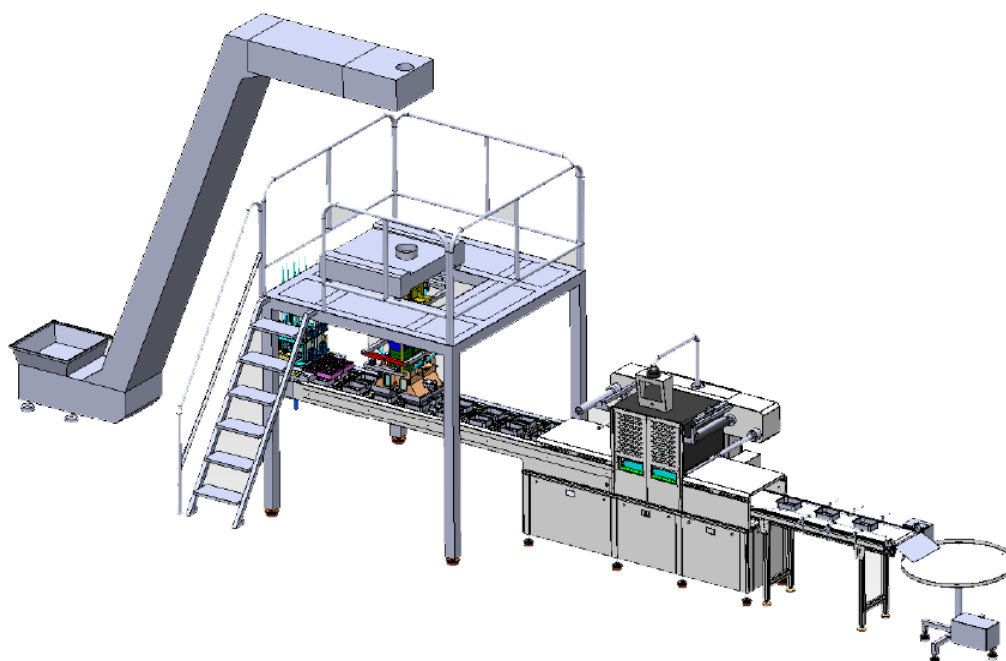
autoMAP100 STANDARD TOOL SET



autoMAP200 STANDARD TOOL SET



autoMAP100 – 200 FULLY AUTOMATIC PACKAGING LINE



autoMAP100-200 Technical Details

ENERGY	400V, 50Hz, 3/N/PE
POWER CONSUMPTION	min 4.0 – max 8.0 kw.
VACUUM PUMP	100 -160 m³/h
AIR PRESSURE	6 Bar Dry
AIR CONSUMPTION	305 NL/minute
GAS	2- 6 Bar
GAS CONSUMPTION	35 NL/per cycle
CAPACITY	8-14 cycle/minute
OPTIONAL	Liquid / Dust Filter
CONTROL CIRCUIT	24 VDC



autoMAP100-200 Dimensions

WIDHT	900 mm.
LENGHT	2.80-3.675 mm
HEIGHT	1.663 mm
LOADING AREA	1.5-3.0 mt
WEIGHT	1000 Kg.
TRANSPORT PACK	1 x pallet 100x400x180cm, approx.1.0 t.
FILM WIDHT	420 mm.
FILM MANDREL DIAMETER	76 mm.
FILM ROLL DIAMETER	300 mm.



autoMAP100Mini

COMPACT SIZE

EASY PACKAGING PROCESS

INNOVATIVE FUNCTIONS

COST EFFECTIVELY

autoMAP100Mini Technical Details

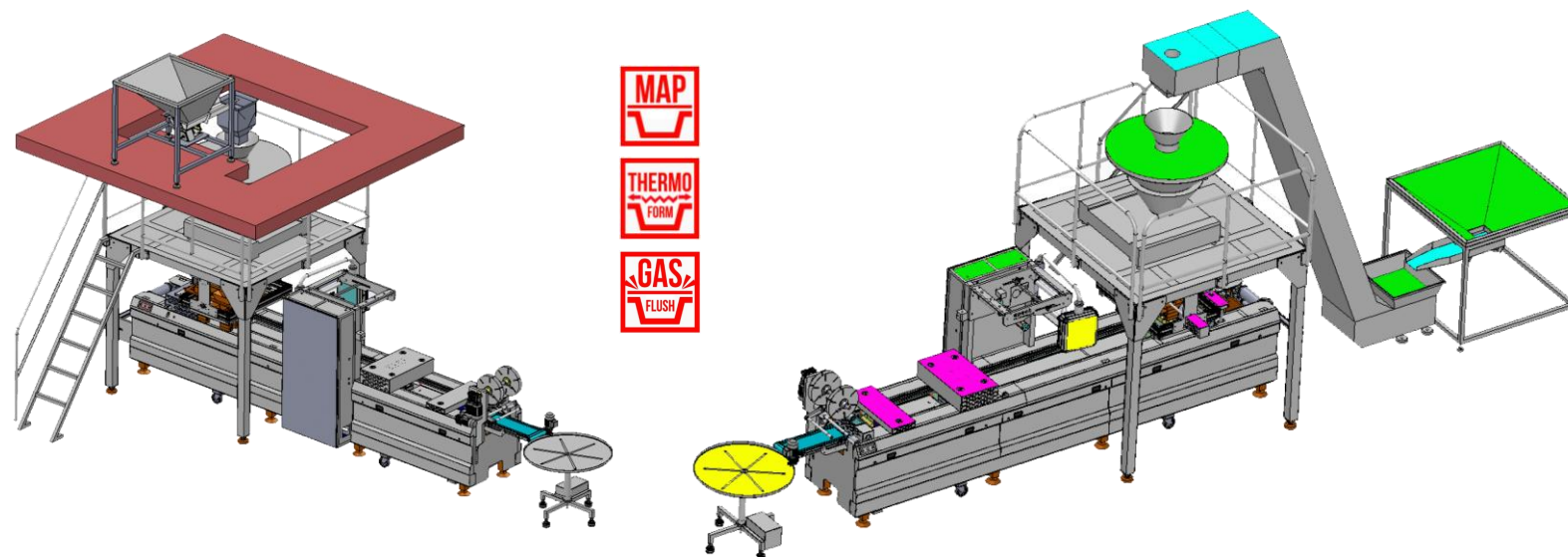
ENERGY	400V, 50Hz, 3/N/PE
POWER CONSUMPTION	min 4.0 – max 8.0 kw.
VACUUM PUMP	100 -160 m³/h
AIR PRESSURE	6 Bar Dry
AIR CONSUMPTION	305 NL/minute
GAS	2- 6 Bar
GAS CONSUMPTION	35 NL/per cycle
CAPACITY	4-6 cycle/minute
ADDITIONAL	Liquid / Dust Filter / Gas Tank
CONTROL CIRCUIT	24 VDC

autoMAP100Mini Dimensions

WIDTH	985 mm.
LENGTH	2100 mm
HEIGHT	910 mm
LOADING AREA	700 mm
WEIGHT	485 Kg.
FILM WIDTH	420 mm.
FILM MANDREL DIAMETER	76 mm.
FILM ROLL DIAMETER	300 mm.



perFORMA 320-360-420-460-520-560 THERMOFORM LINE



APACK **perFORMA** serie thermoforming machines provides quick service and cleaning facilities by easy-removable side covers . All frames and intermediate elements were manufactured with ISI304 stainless steel. We build the **perFORMA** unit with using polished construction material for safe and hygiene in VDE-CE standards . Mould can change very quickly and easily. A new heating system for uniform temperature heating / control system is installed.

Step vacuum process can be easily implemented with special software. In this way, all the oxygen in the package and in the product is taken out. Liquid foods, sauces, hot products packed in hermetically even can be easily packed. After the desired atmosphere prepared for the package, the upper film is sealed over preformed food tray. Now the package is closed tightly. The correlation inside and outside of the package is interrupted.

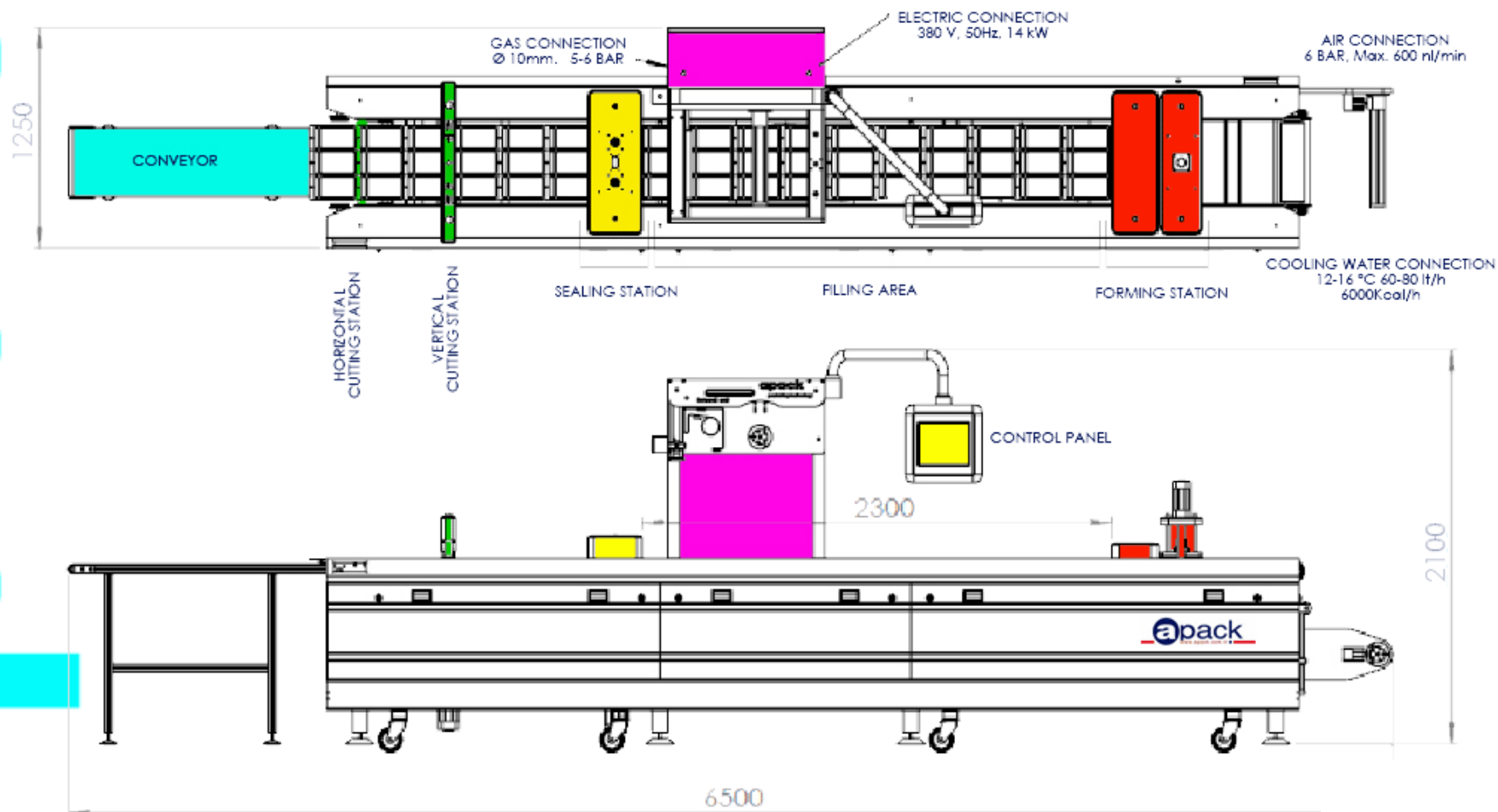
LCD graphic display with touchscreen is very easy to use. Multilingual programmed control panel can turn to the desired direction in VDU norms. Adjustable up to 99 different process programs. The minimum and maximum temperature values can be monitored simultaneously on the touchscreen. The unit's working order and possible errors, error logs are displayed on the control display. All the settings and features of the machine functions can be controlled from the touchscreen. If necessary, the work settings can be avoided by locking for the potential user faults. Counting products, hours of operation, cycles, production process, errors, functions reports can show in any time on the control panel.

Besides all these useful functiones, our **perFORMA** thermoforming machine has remote access option.

The **perFORMA** thermoform machines provides to maximum reliability and the flexibility to adapt your production demands.



perFORMA 320-360-420-460-520-560 THERMOFORM LINE



perFORMA 320-360-420-460-520-560 THERMOFORM LINE

perFORMA Technical Details

ENERGY	3/N/PE AC 400V 50 Hz
POWER CONSUMPTION	Min 4 Max 10 kw
VACUUM PUMP	6 Bar 400-600 nl/min
COOLING WATER	60-80 lt/h
LID FILM	Ø 350 mm Soft & Paper 80-150 mic
BASE FILM WIDHT	320 – 360 – 420 - 460
FILM TYPE	Ø 350 mm Soft & Semi Hard 130-400 mic
FILM MANDREL DIAMETER	76 mm. – 3"
CAPACITIY	6-8 cycle/min
PNEUMATIC	Festo, MetalWork
CONTROL PANEL	BEIJER IXTTZE Touchscreen, FATEK FB32 PLC

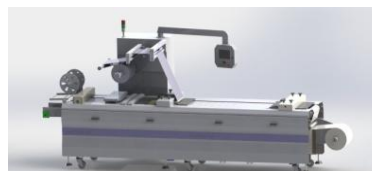
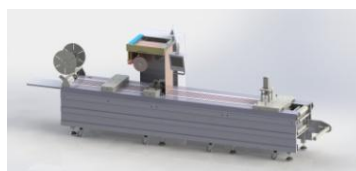
perFORMA Dimensions

WIDHT	4.150 mm
LENGHT	1.070 mm
HEIGHT	1.700 mm
THERMOFORM HEIGH	max 140 mm



perFORMA MEDICAL PACKAGING LINES

APACK serving the food industry for many years, although from time to time from different sectors are responding to the demands of the packaging machine. After our packaging machinery for automotive spare parts that we made previously and now we produce packaging solutions for Medical Supplies. This year we build a disposable toothpaste thermoform packaging unit and we build perFORMA series thermoform machines for packaging different types of medical supplies.



VC600 SINGLE CHAMBER VACUUM MACHINE



VC600 is a single chamber vacuum machine. It is made by stainless steel body and high quality, impact proof plexyglass top cover.

VC600 fits in a small places. It can be easily move and never needs readjustment.

VC600 has a very useful digital control panel. You can control every function of vacuum processing.

VC600 has got international attestation of compliance certificates.

In addition to all this specialities, **VC600** has got gas system as standard.

The gas delivery system fitted as standard with **VC600** vacuum machine without crushing your product, without breaking, removing the water, you can vacuum without bringing puree. The gas system can turn off if not neccesary.

VC600 Sealing Unit is easily remove and clean.

VC600 consumes less energy as compared to other.

VC600 is very effective solution for small or medium level productions.

APACK supports deliver high quality vacuum pouches.

VC600 Technical Details

ENERGY	AC220V, 1 Ph, 50 Hz.
ENERGY CONSUMPTION	5kW
VACUUM PUMP	54 cbm/h
CHAMBER DIMENSIONS	600x635x170 mm
SEAL BAR	600x10 mm
GAS UNIT	N2/CO2/O2
GAS CONSUMPTION	4-6 bar
CAPACITY	2-3 cycle/min
MACHINE DIMENSIONS	700 X 700 X 970 mm
TOTAL WEIGHT	130 kg NET / 180 kg GROSS

VCM750 DOUBLE CHAMBER VACUUM MACHINE

As inner air is deflated, the decomposition by microorganism, rust on the metal parts can be prevented. But when it comes to the food, we sterilize it at 80°C after packing because there might be some limit in inner vacuum degree. As packing size is the smallest one, it is convenient for transportation, storage and sterilization by heating. Vacuum state can be made when the air in the container, which resists average air pressure 760mmHg on the ground, is deflated by inhalation pump. In case the container cannot resist average air pressure, it will be shrunk when the air is deflated. (Vinyl vacuum packing for food) Vacuum state (almost no air state) can be made if the air is deflated in a completely tight condition with plastic syringe, after closing the entrance.

VCM750 is a high capacity double chamber vacuum machine. It is made by stainless steel body and high quality, impact proof ironcast moving top cover.

VCM750 fits in a small places. It can be easily move and never needs readjustment.

VCM750 has a very useful digital control panel. You can control every function of vacuum processing.

VCM750 has got international attestation of compliance certificates.

In addition to all this specialities, **VCM750** has got gas system as standard.

The gas delivery system fitted as standard with **VCM750** vacuum machine without crushing your product, without breaking, removing the water, you can vacuum without bringing puree. The gas system can turn off if not necessary.

VCM750 Sealing Unit is easily remove and clean. Chambers makes process separately.

VCM750 consumes less energy as compared to other.

VCM750 is very effective solution medium or high level productions.

APACK supports deliver high quality vacuum pouches.

VCM750 Technical Details	
ENERGY	380 V/ AC220V, 3Ph, 50Hz
ENERGY CONSUMPTION	Min 4.0 kW-Max 7.0 kW
VACUUM PUMP	120 cbm/h
CHAMBER DIMENSIONS	600x635x170 mm
SEAL BAR	600x10 mm dual
GAS UNIT	N ₂ , CO ₂ , O ₂
GAS CONSUMPTION	4-6 bar
CAPACITY	2-3 cycle/min
MACHINE DIMENSIONS	1570x825x970 mm
TOTAL WEIGHT	660 kg NET 770 KG GROSS



ROBOTIC ARMS



